

SERVICE BULLETIN

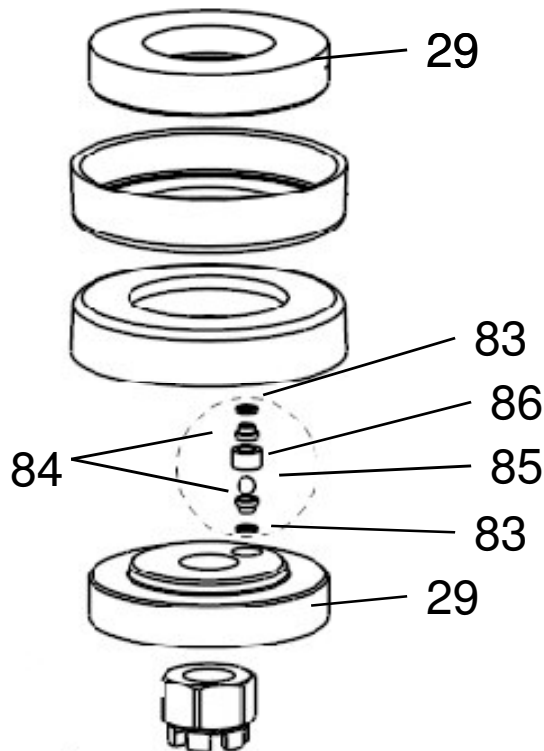
67200-xxx and 67201-xxx 4-Ball Lower Pump Ends Piston Follower Changes

RELEASED: 07-09-09
REVISED: 1-10-12
Rev. 01
BULLETIN: #3-09

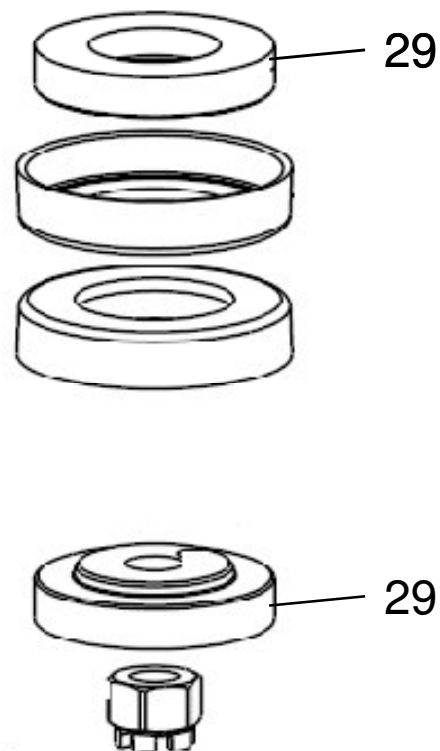
Piston Followers were redesigned to eliminate the valve mechanism within the piston assembly. This change went into effect on subject pump manufactured after 1 December 2008 (S/N L0018-xxx)

Item No	Qty	Description	Before	After
			Part No	Part No
29 (67200-xxx)	2	Follower	94664	96700
29 (67201-xxx)	2	Follower	94507	96701
83	2	Gasket	92425	none
84	2	Ball Seat	92424	none
85	1	Ball	93508-1	none
86	1	Spacer	94936	none

Before



After



PN: 97999-1603

INGERSOLL RAND COMPANY LTD
209 NORTH MAIN STREET - BRYAN, OHIO 43506
☎ (800) 495-0276 • FAX(800) 892-6276
www.ingersollrandproducts.com

© 2012

CCN 46735106

ARO

IR Ingersoll Rand
Industrial Technologies